



# DESIGN MANUAL



For sales & support in Canada contact [HUBSS.com](http://HUBSS.com)

HUB East (416) 540-9287

HUB West (604) 309-8212

# DESIGN MANUAL

There are literally hundreds of design combinations for TrafficPatterns® crosswalks and traffic calming surfaces. The purpose of this Design Manual is to provide a visual glance of ideas and suggestions using various combinations of patterns, borders, and colors.

Specifications and CAD drawings are available at [www.ennisflint.com](http://www.ennisflint.com) and [www.CADdetails.com](http://www.CADdetails.com)



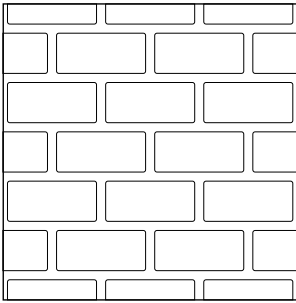
Made of durable preformed thermoplastic pavement marking material, TrafficPatterns® provides a cost-effective alternative to the use of brick and stone pavers because the material is surface applied and virtually maintenance free. The pattern and color combinations of the interconnected sheets allow designers the flexibility to create the ideal crosswalk or traffic calming pattern that complements an overall streetscape design.

Ennis-Flint, the world's leading manufacturer and distributor of preformed thermoplastic pavement marking materials, makes a complete line of products at our U.S. facility which is ISO 9001:2008 certified for design, development, and manufacturing. Ennis-Flint's commitment is reflected in proven quality and customer satisfaction and has been for over 24 years. Ennis-Flint offers pavement markings for use on streets and highways, crosswalks, intersections, parking areas, and many airside and landside uses at airports. From lines, legends, and arrows to traffic calming crosswalks and detectable warnings, Ennis-Flint's products help motorists, cyclists, pilots, and pedestrians move in the right direction...*safely*.

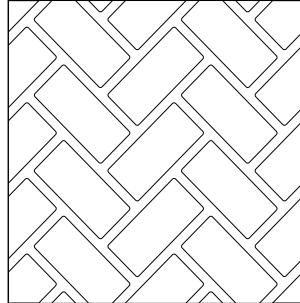
4686 217a St. Langley BC Canada (604) 309-8212 [www.hubss.com](http://www.hubss.com)

# PATTERNS & BORDERS

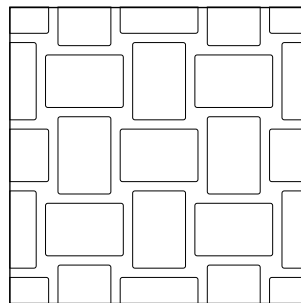
## PATTERNS



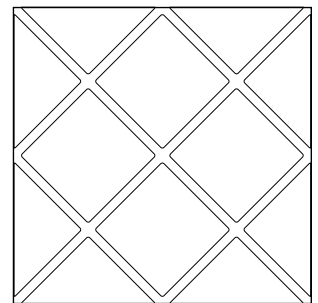
TP21 - Running Bond



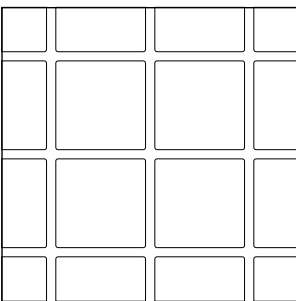
TP22 - Herringbone



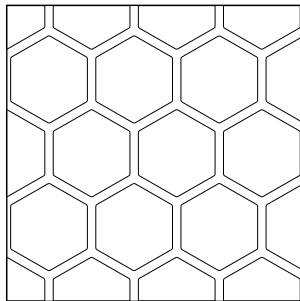
TP24 - Plain Weave



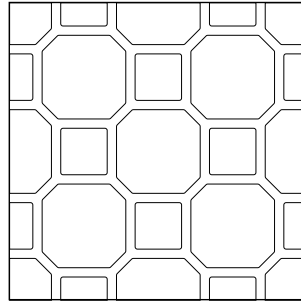
TP26 - Diagonal Tile



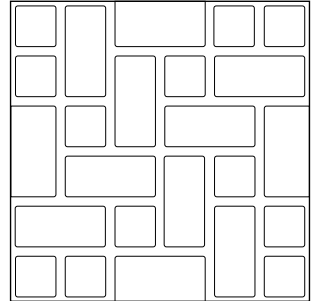
TP27 - Stacked Tile



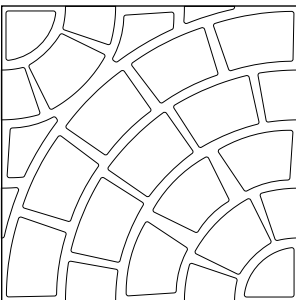
TP29 - Honeycomb



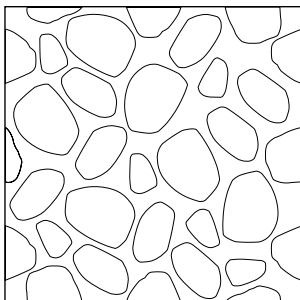
TP30 - Courtyard



TP31 - Ashlar

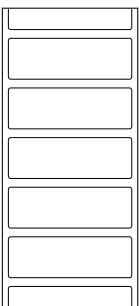


TP32 - Quarter Round

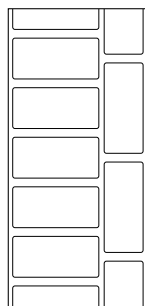


TP33 - Terrazzo

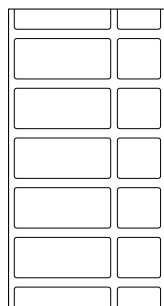
## BORDERS



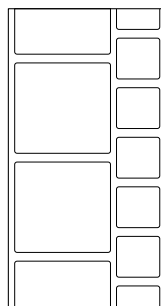
TP36



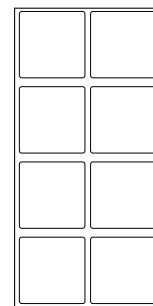
TP37



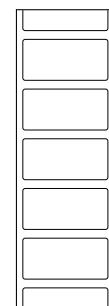
TP38



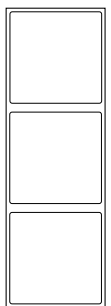
TP39



TP40

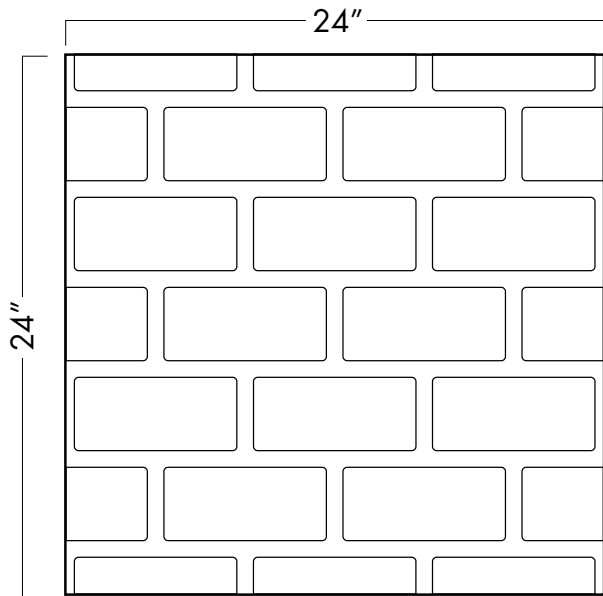


TP41



TP42

# RUNNING BOND - TP21



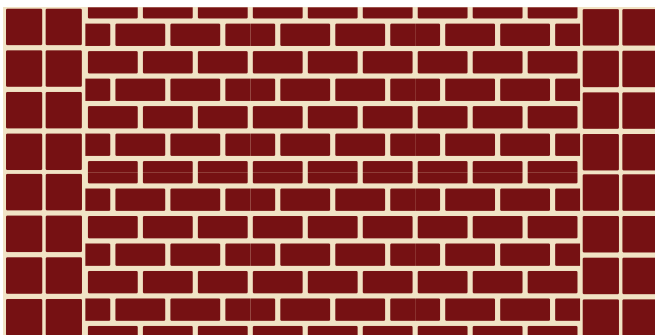
Interconnected preformed thermoplastic pavement marking material combines look of brick and grout pattern.

- 2' x 2' sheet
- 125-mil thick
- Pattern repeats horizontally and vertically
- Can be rotated for additional design variability
- 3/4" grout lines and 7-1/4" X 3-1/4" bricks with rounded corners
- Surface-applied with infrared heater or propane heat torch
- Applies to asphalt or concrete
- No stamping templates or grids required

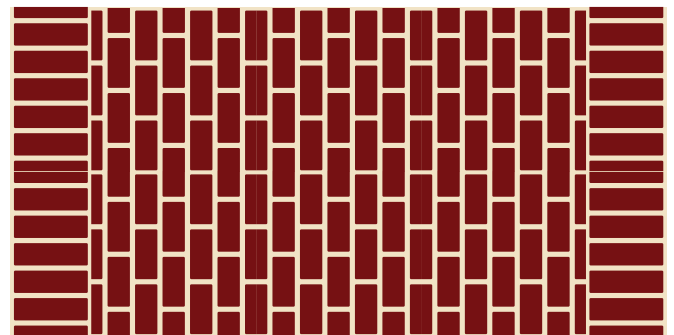
Use Running Bond TP21 alone or choose from 7 different border options.

## TP21-RBSD - Brick Red bricks, Sand grout

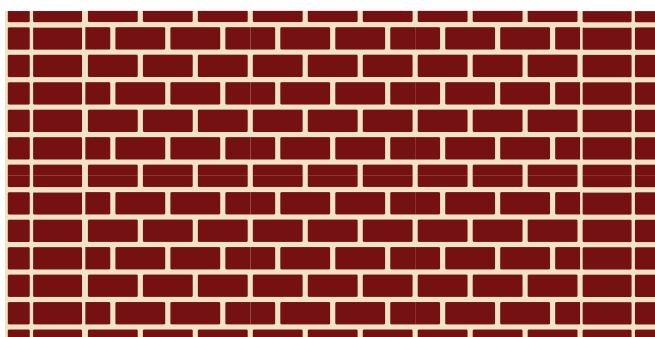
Examples shown below



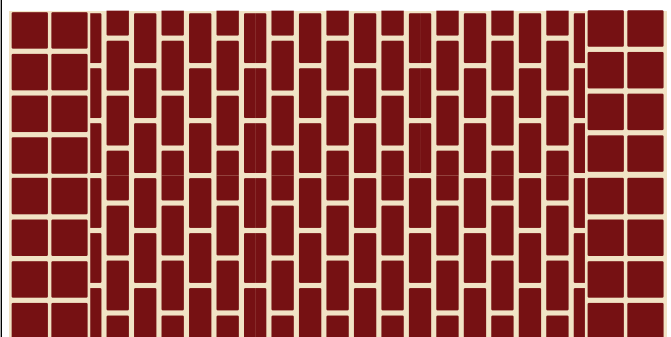
TP21 pattern / TP40 border



TP21 pattern (rotated 90°) / TP36 border

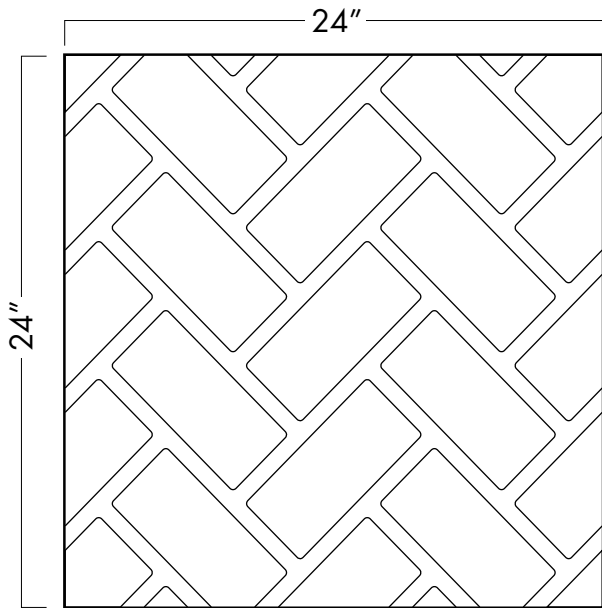


TP21 pattern / TP38 border



TP21 pattern (rotated 90°) / TP40 border

# HERRINGBONE - TP22



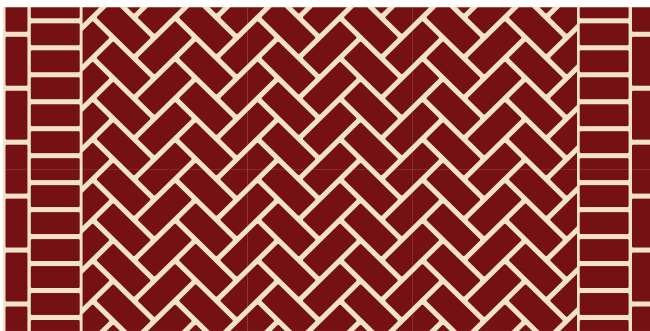
Interconnected preformed thermoplastic pavement marking material combines look of brick and grout pattern.

- 2' x 2' sheet
- 125-mil thick
- Pattern repeats horizontally and vertically
- Can be rotated for additional design variability
- 3/4" grout lines and approximately 7-3/4" X 3-1/2" bricks with rounded corners
- Surface-applied with infrared heater or propane heat torch
- Applies to asphalt or concrete
- No stamping templates or grids required

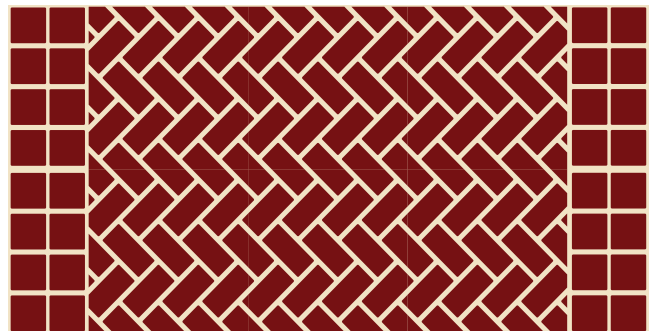
Use Herringbone TP22 alone or choose from 7 different border options.

## TP22-RBSD - Brick Red bricks, Sand grout

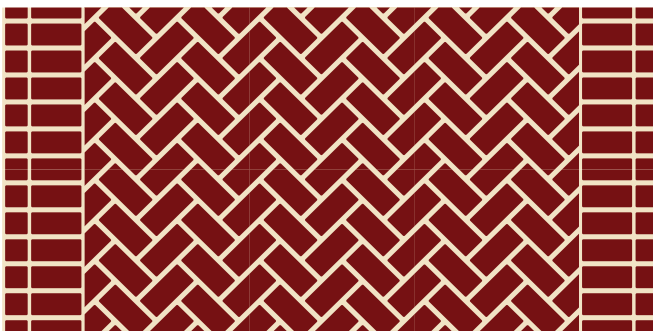
Examples shown below



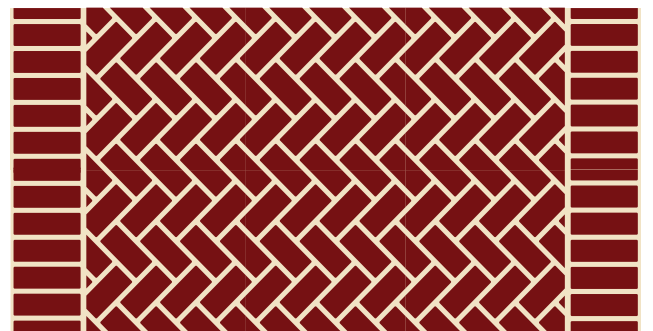
TP22 pattern / TP37 border



TP22 pattern rotated 90° / TP40 border

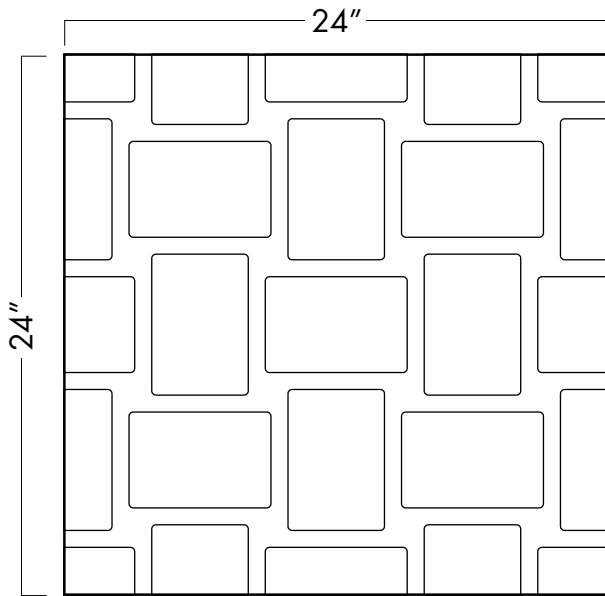


TP22 pattern / TP38 border



TP22 pattern rotated 90° / TP36 border

# PLAIN WEAVE - TP24



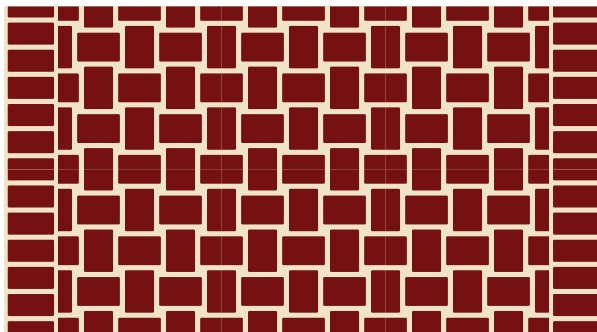
Interconnected preformed thermoplastic pavement marking material combines look of brick and grout pattern.

- 2' x 2' sheet
- 125-mil thick
- Pattern repeats horizontally and vertically
- 3/4" grout lines and approximately 6-1/4" X 4-1/4" bricks with rounded corners
- Surface-applied with infrared heater or propane heat torch
- Applies to asphalt or concrete
- No stamping templates or grids required

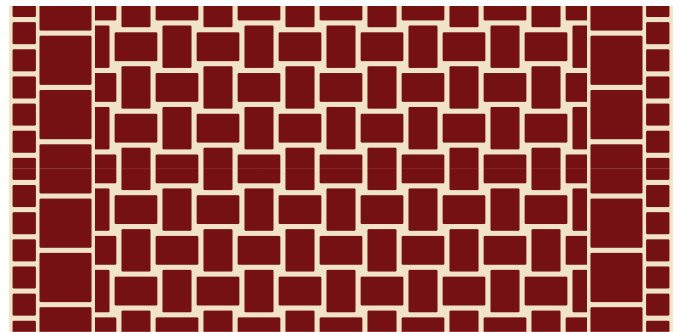
Use Plain Weave TP24 alone or choose from 7 different border options.

## TP24-RBSD - Brick Red bricks, Sand grout

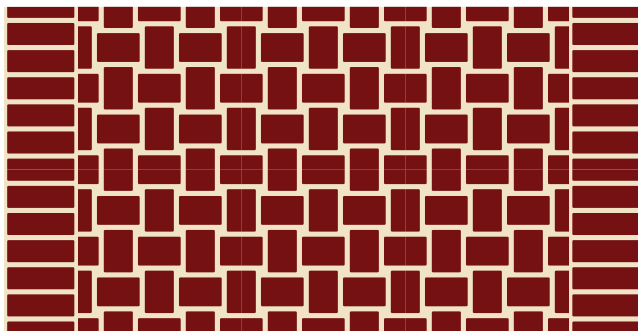
Examples shown below



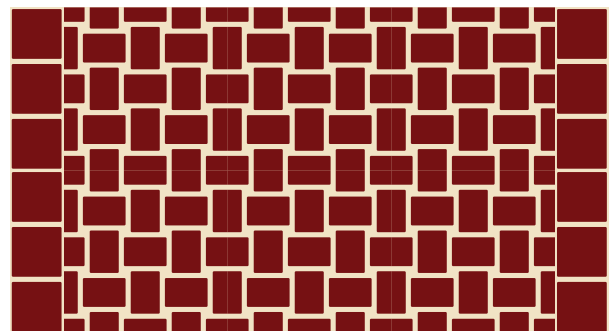
TP24 pattern / TP41 border



TP24 pattern / TP39 border

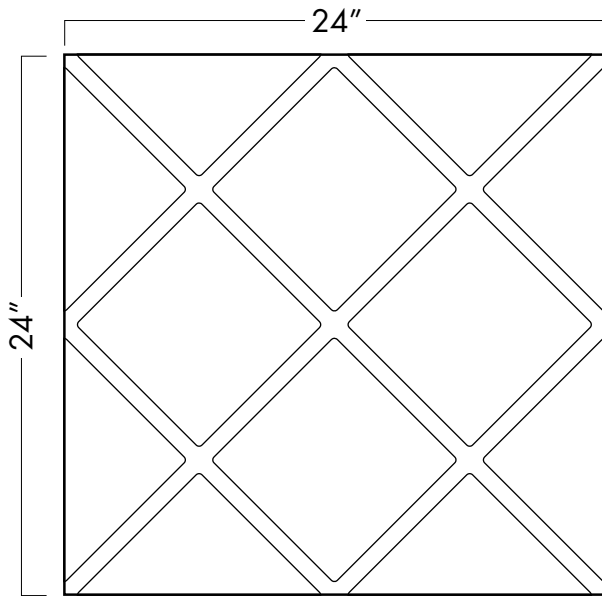


TP24 pattern / TP36 border



TP24 pattern / TP41 border

# DIAGONAL TILE - TP26



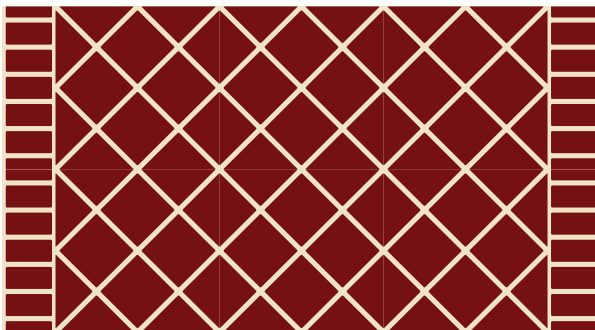
Interconnected preformed thermoplastic pavement marking material combines look of tile and grout pattern.

- 2' x 2' sheet
- 125-mil thick
- Pattern repeats horizontally and vertically
- 3/4" grout lines and approximately 7-3/4" X 7-3/4" tiles with rounded corners
- Surface-applied with infrared heater or propane heat torch
- Applies to asphalt or concrete
- No stamping templates or grids required

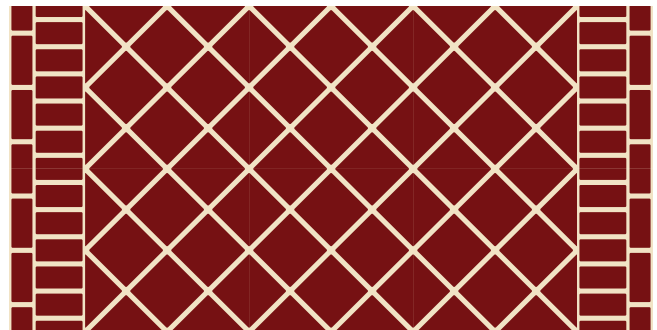
Use Diagonal Tile TP26 alone or choose from 7 different border options.

## TP26-RBSD - Brick Red bricks, Sand grout

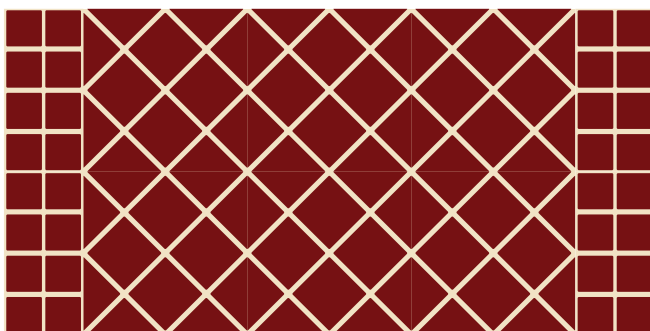
Examples shown below



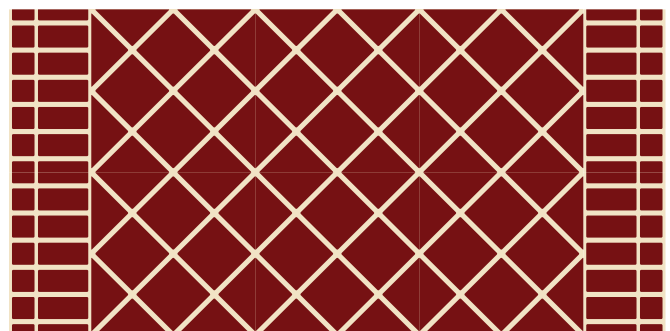
TP26 pattern / TP41 border



TP26 pattern / TP37 border

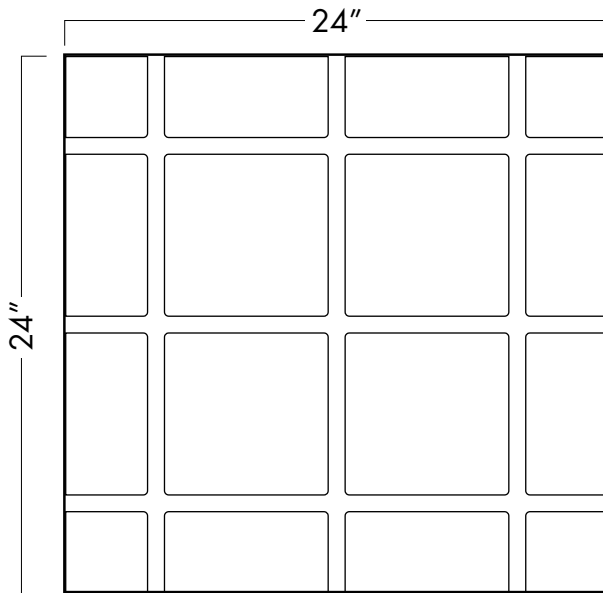


TP26 pattern / TP40 border



TP26 pattern / TP38 border

# STACKED TILE - TP27



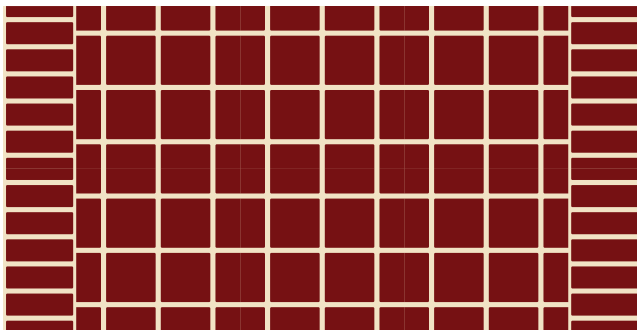
Interconnected preformed thermoplastic pavement marking material combines look of tile and grout pattern.

- 2' x 2' sheet
- 125-mil thick
- Pattern repeats horizontally and vertically
- 3/4" grout lines and approximately 7-1/4" X 7-1/4" tiles with rounded corners
- Surface-applied with infrared heater or propane heat torch
- Applies to asphalt or concrete
- No stamping templates or grids required

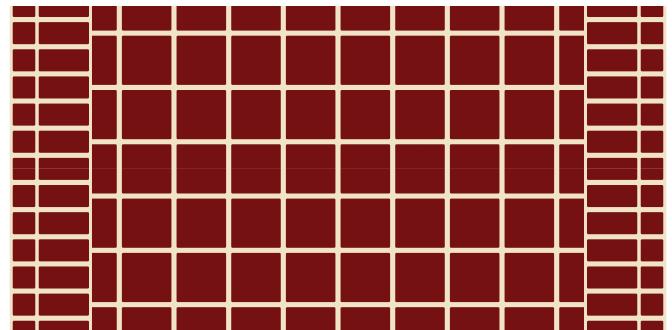
Use Stacked Tile TP27 alone or choose from 7 different border options.

## TP27-RBSD - Brick Red tiles, Sand grout

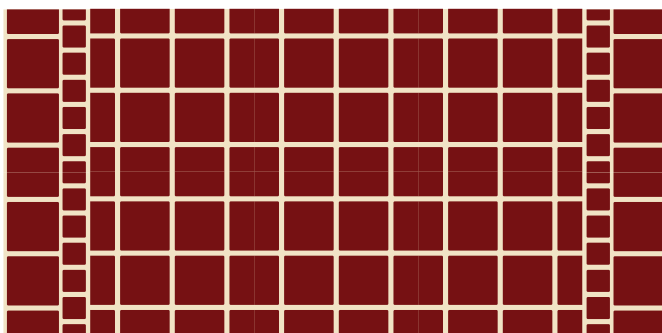
Examples shown below



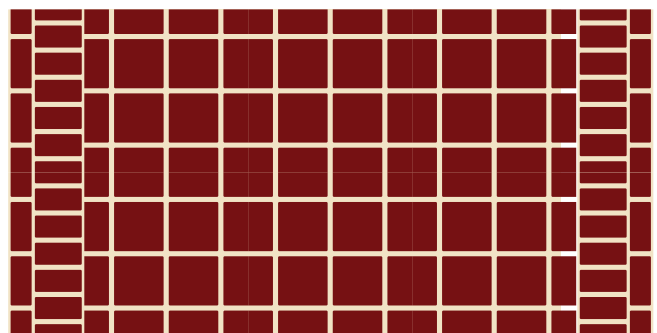
TP27 pattern / TP36 border



TP27 pattern / TP38 border



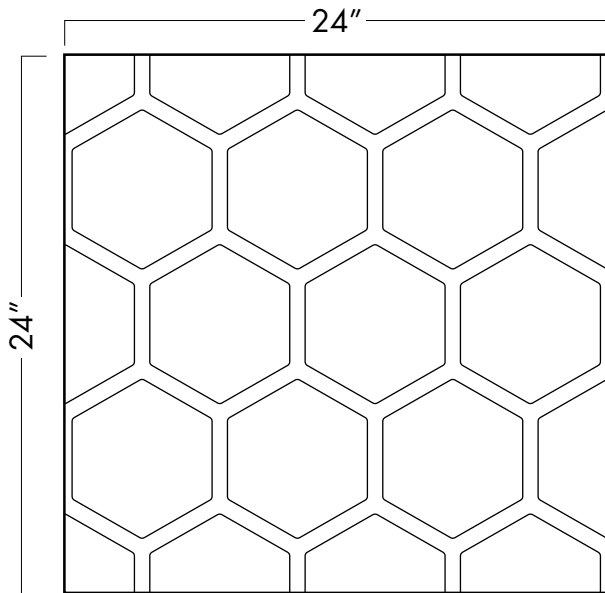
TP27 pattern / TP39 border



TP27 pattern / TP37 border



# HONEYCOMB - TP29



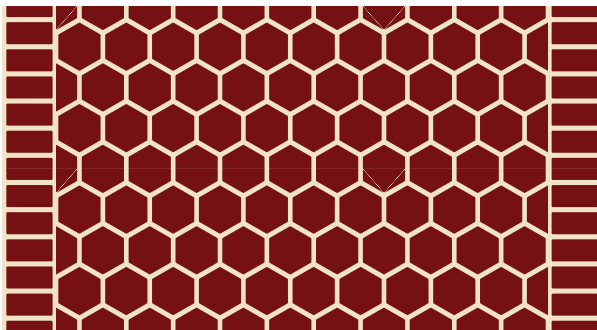
Interconnected preformed thermoplastic pavement marking material combines look of pavers and grout pattern.

- 2' x 2' sheet
- 125-mil thick
- Pattern repeats horizontally and vertically
- Can be rotated for additional design variability
- 3/4" grout lines and approximately 7" X 6-1/8" hexagonal pavers
- Surface-applied with infrared heater or propane heat torch
- Applies to asphalt or concrete
- No stamping templates or grids required

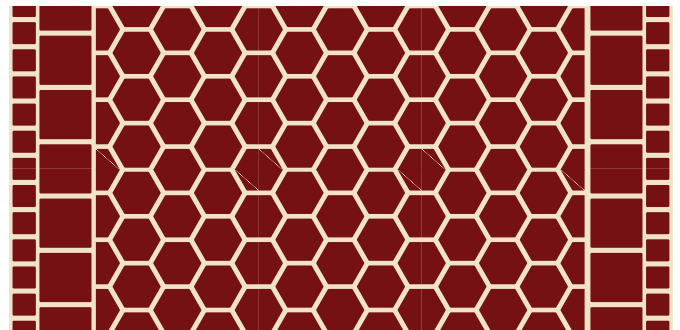
Use Honeycomb TP29 alone or choose from 7 different border options.

## TP29-RBSD - Brick Red pavers, Sand grout

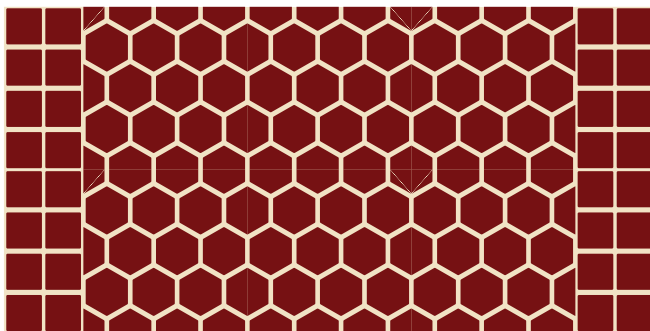
Examples shown below



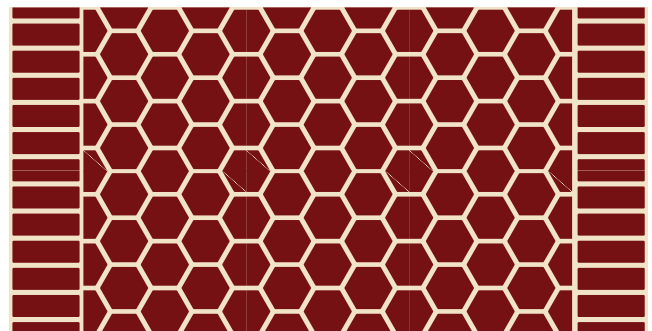
TP29 pattern / TP41 border



TP29 pattern rotated 90° / TP39 border

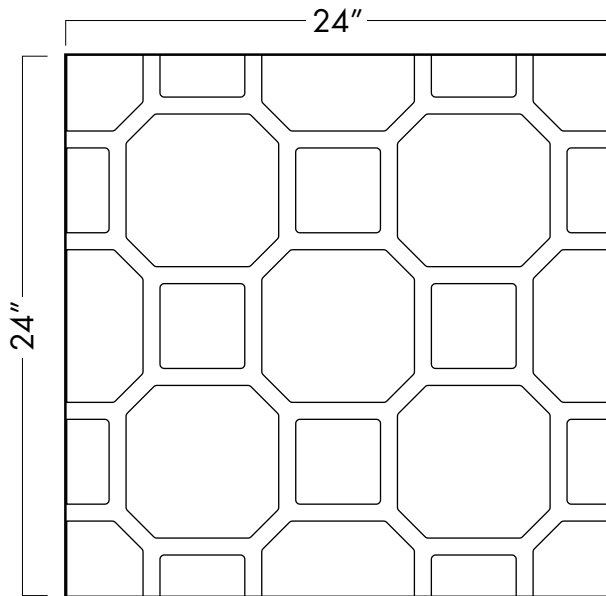


TP29 pattern / TP40 border



TP29 pattern rotated 90° / TP36 border

# COURTYARD - TP30



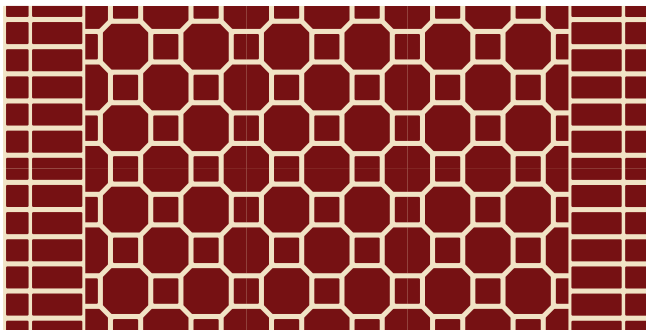
Interconnected preformed thermoplastic pavement marking material combines look of pavers and grout pattern.

- 2' x 2' sheet
- 125-mil thick
- Pattern repeats horizontally and vertically
- 3/4" grout lines and approximately 6-3/4" octagonal X 3-3/4" square pavers with rounded corners
- Surface-applied with infrared heater or propane heat torch
- Applies to asphalt or concrete
- No stamping templates or grids required

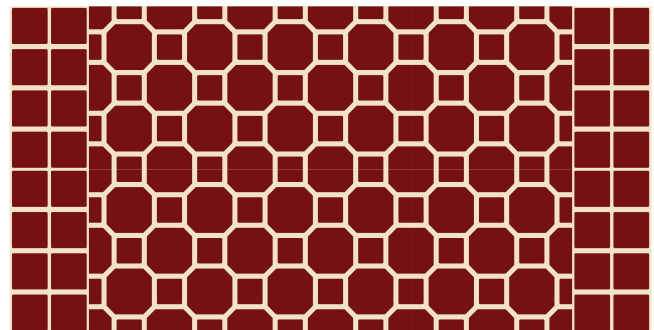
Use Courtyard TP30 alone or choose from 7 different border options.

## TP30-RBSD - Brick Red pavers, Sand grout

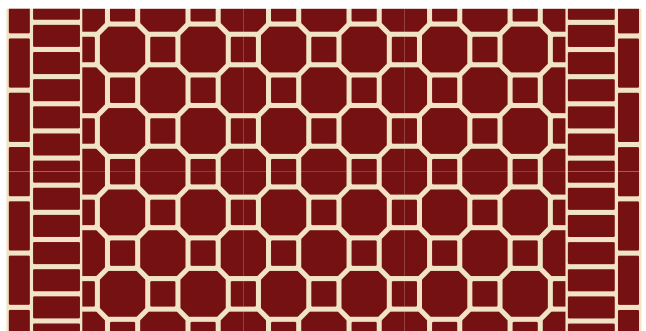
Examples shown below



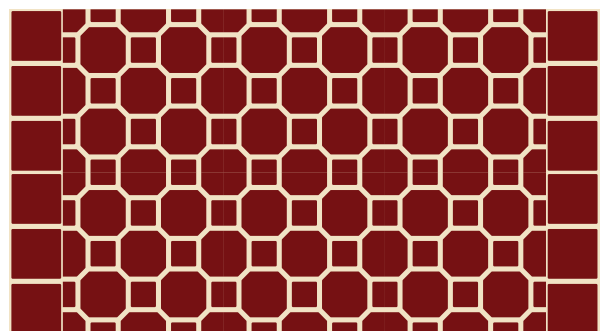
TP30 pattern / TP38 border



TP30 pattern / TP40 border

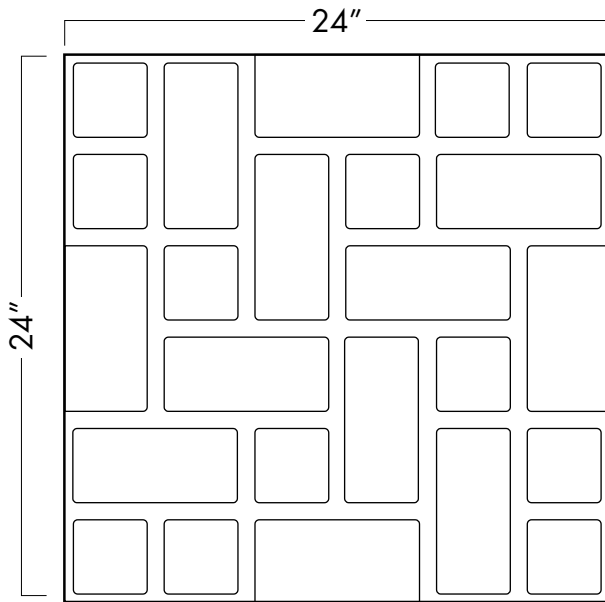


TP30 pattern / TP37 border



TP30 pattern / TP42 border

# ASHLAR - TP31



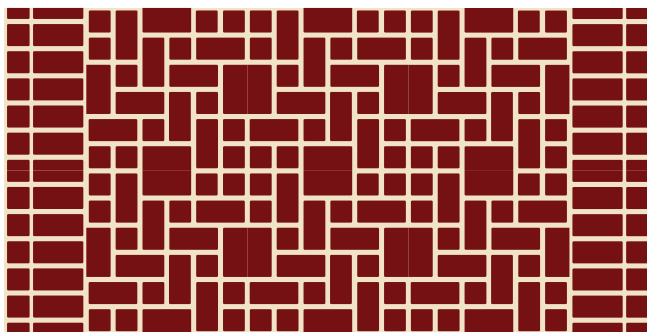
Interconnected preformed thermoplastic pavement marking material combines look of pavers and grout pattern.

- 2' x 2' sheet
- 125-mil thick
- Pattern repeats horizontally and vertically
- 3/4" grout lines and approximately 7-1/4" X 3-1/4" and 3-1/4" square and 7-1/4" square pavers with rounded corners
- Surface-applied with infrared heater or propane heat torch
- Applies to asphalt or concrete
- No stamping templates or grids required

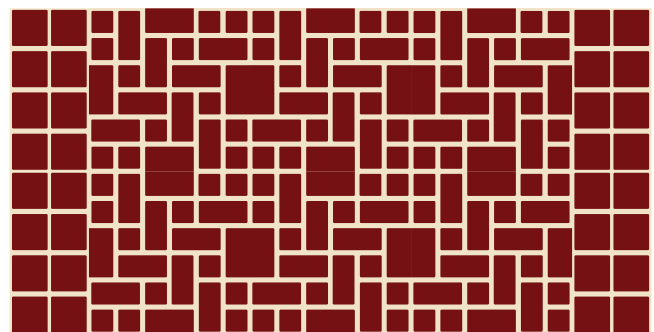
Use Ashlar TP31 alone or choose from 7 different border options.

## TP31-RBSD - Brick Red pavers, Sand grout

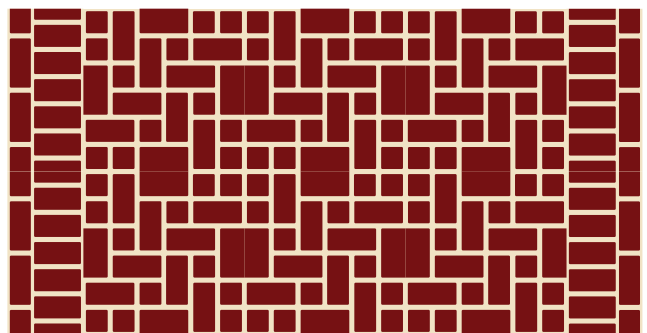
Examples shown below



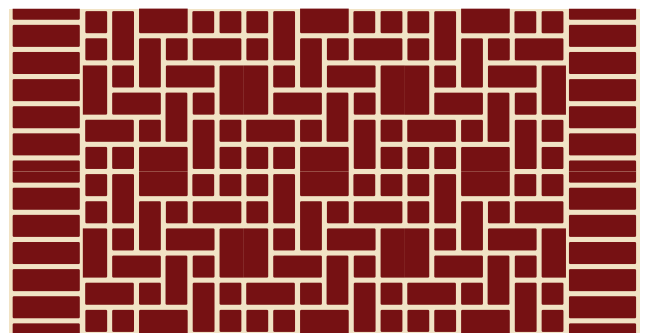
TP31 pattern / TP38 border



TP31 pattern / TP40 border

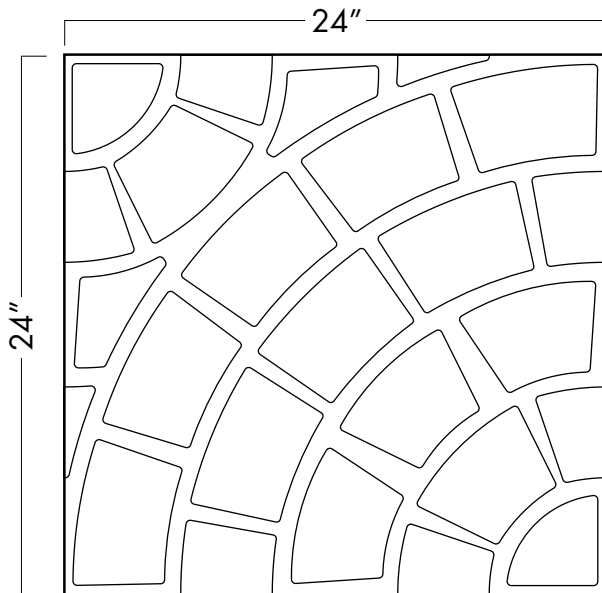


TP31 pattern / TP37 border



TP31 pattern / TP36 border

# QUARTER ROUND - TP32



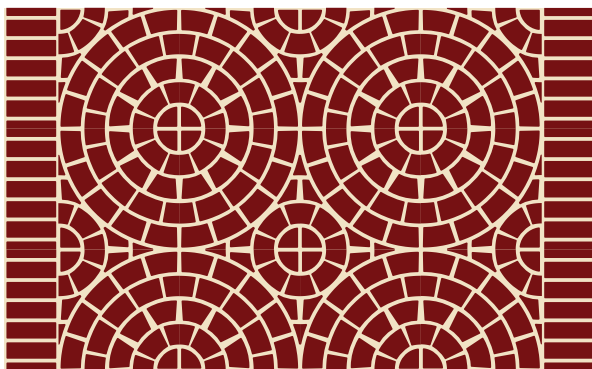
Interconnected preformed thermoplastic pavement marking material combines look of paver and grout pattern.

- 2' x 2' sheet
- 125-mil thick
- Pattern repeats horizontally and vertically
- Can be rotated for additional design variability
- 3/4" grout lines and varying rounded pavers with rounded corners
- Surface-applied with infrared heater or propane heat torch
- Applies to asphalt or concrete
- No stamping templates or grids required

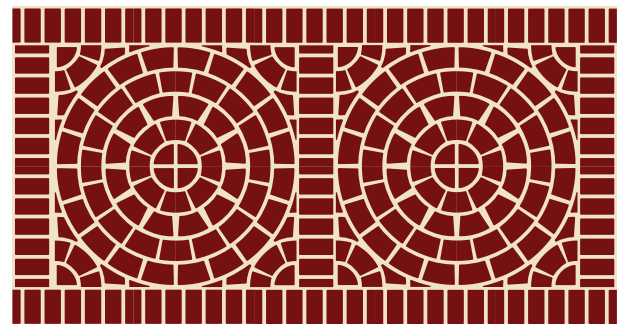
Single piece can be rotated and oriented differently for various pattern designs (two examples shown below)

## TP32-RBSD - Brick Red pavers, Sand grout

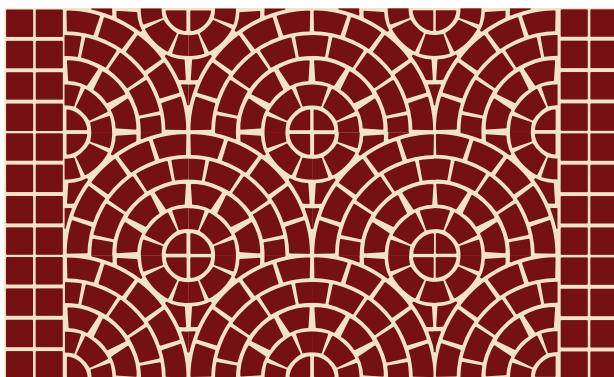
Examples shown below



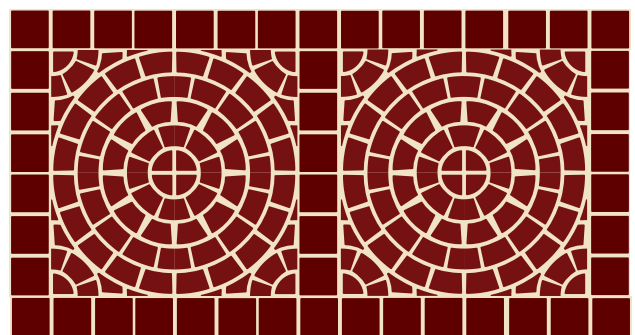
TP32 pattern/TP36 border **Wheel Design**



TP32 pattern/TP36 border  
**Wheel Design with Frame**

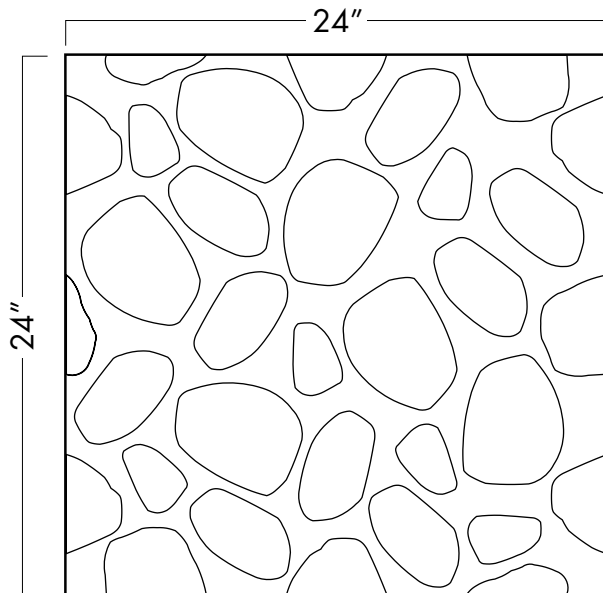


TP32 pattern/TP40 border **Scallop Design**



TP32 pattern (Brick Red)/TP42 border (Dark Brick Red)  
**Scallop Design with Frame**

# TERRAZZO - TP33



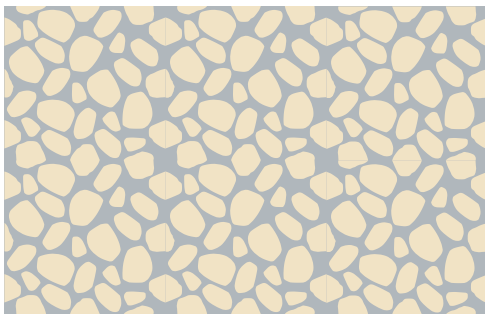
Interconnected preformed thermoplastic pavement marking material combines look of stone and grout pattern.

- 2' x 2' sheet
- 125-mil thick
- Pattern repeats horizontally and vertically
- Can be rotated for additional design variability
- Varying grout lines with 6 stone shapes
- Surface-applied with infrared heater or propane heat torch
- Applies to asphalt or concrete
- No stamping templates or grids required

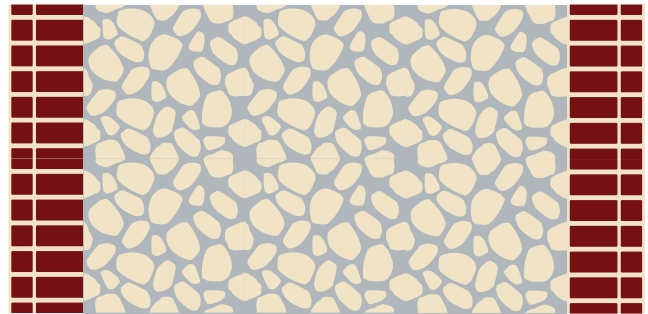
Use Terrazzo TP33 alone or choose from 7 different border options.

## TP33-SDGY - Sand stones, Grey grout

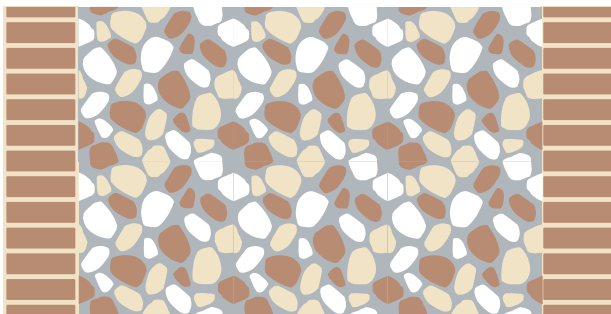
Examples shown below



**TP33** pattern / no border



**TP33** pattern (Sand stones, Grey grout)  
**TP38** border (Red brick pattern, Sand grout)



**TP33** Terrazzo shown in Tri-Tone  
(Sonoma Sand, Sand, White stones, Grey grout)  
**TP36** border (Sonoma Sand brick, sand grout)



**TP33** pattern (Grey stones, Sand grout)  
**TP37** border (Red brick pattern, Sand grout)

# TYPICAL COLOR COMBINATIONS

## TYPICAL PATTERN COLORS



BRICK RED



COLONIAL BRICK



SONOMA SAND



SANTA FE CLAY

## TYPICAL GROUT COLORS



WHITE



SAND



BLACK

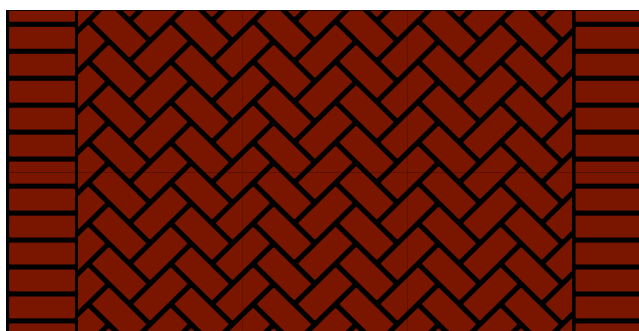


GREY

## Typical Combinations



Brick Red bricks, White grout



Colonial Brick bricks, Black grout



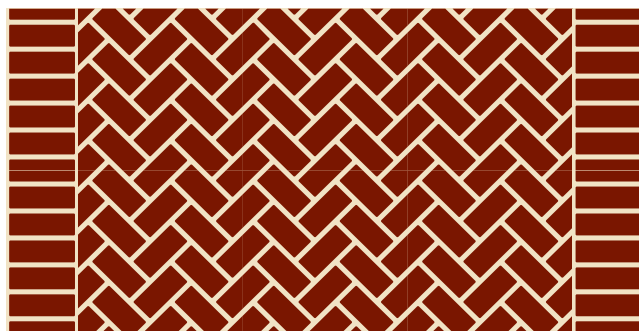
Sonoma Sand bricks, Sand grout



Santa Fe Clay bricks, White grout



Brick Red bricks, Grey grout



Colonial Brick bricks, Sand grout

# NATURAL BRICK COLLECTION



BRICK RED



DARK BRICK RED



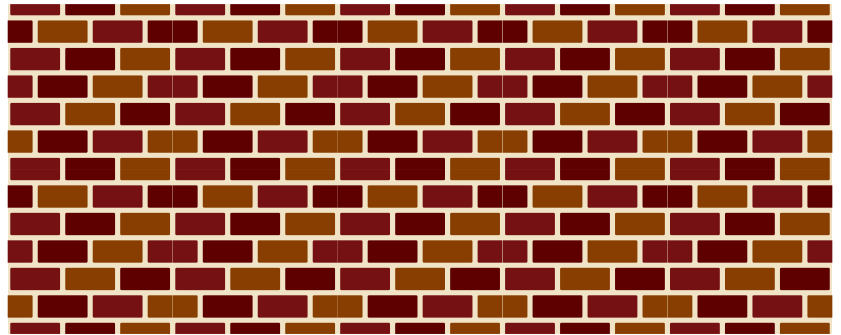
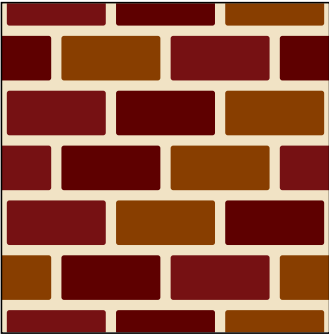
CHESTNUT



SAND

Three-color combination brick pattern (Brick Red, Dark Brick Red, Chestnut) with Sand grout.

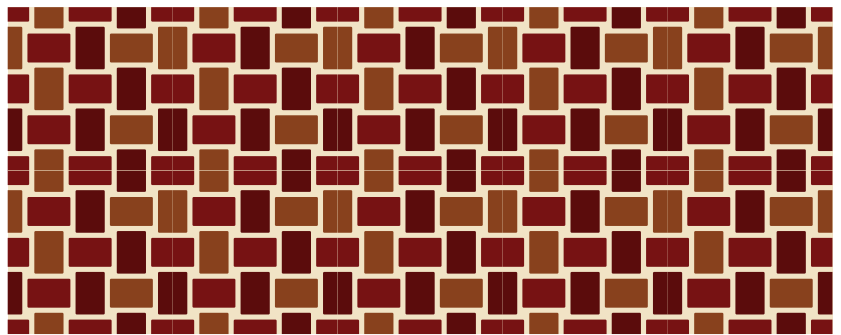
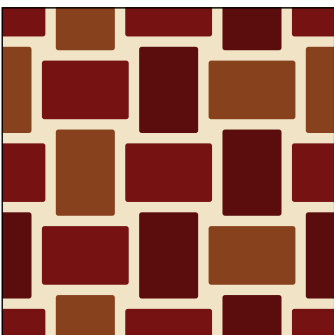
## TP21 - Running Bond



## TP22 - Herringbone



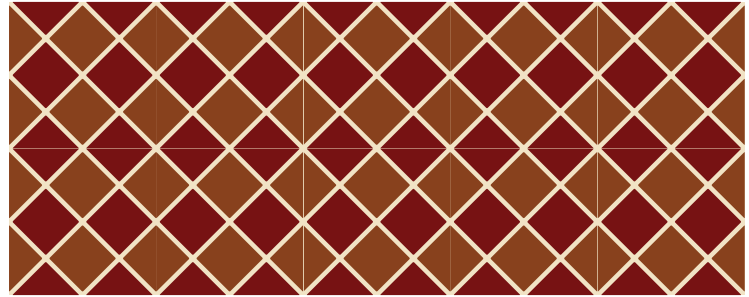
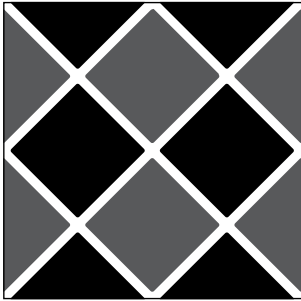
## TP24 - Plain Weave



# DUO-TONE COLLECTION

Two-color combination standard brick color with one standard grout color.  
Standard colors shown on page 17 of this Design Manual.

TP26 - Diagonal Tile

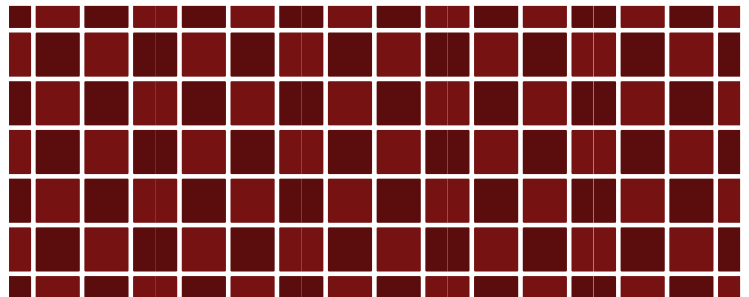
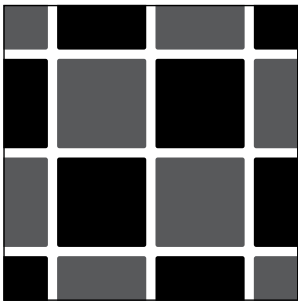


BRICK RED



CHESTNUT

TP27 - Stacked Tile

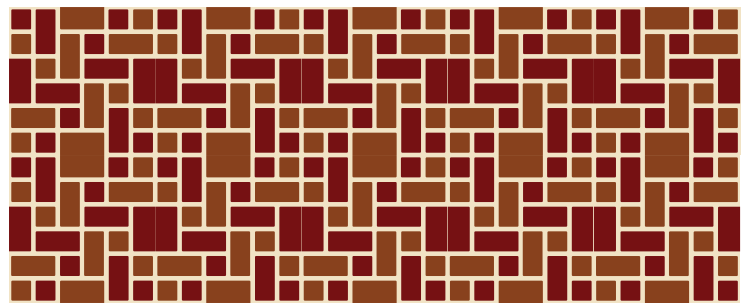
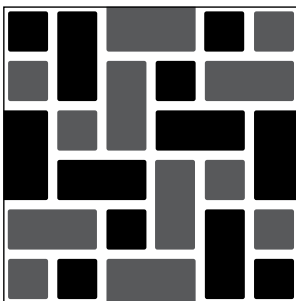


BRICK RED



DARK BRICK RED

TP31 - Ashlar



BRICK RED



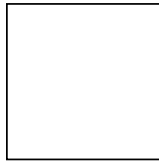
CHESTNUT



# STANDARD COLORS



BLACK



WHITE



SAND



TAN



BRICK RED



COLONIAL  
BRICK



HERITAGE  
RED



FIELD GRAY



SONOMA  
SAND



CINNAMON



SANTA FE  
CLAY



CHESTNUT



GREY



DARK  
BRICK RED



KHAKI



SIENNA

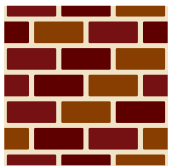


COCOA

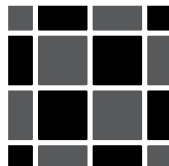


SALMON

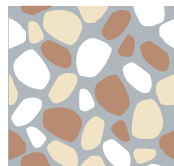
# PREMIUM COLORS



NATURAL



DUO-TONE  
COMBINATION



TRI-TONE  
COMBINATION  
AVAILABLE IN  
TERRAZZO  
PATTERN ONLY

Colors may appear different on various monitors and printers. The colors you see on your screen may not be accurate reproduction of the actual preformed thermoplastic material. We have made the colors above as accurately as possible. Upon availability, a color sample may be provided upon request. Extra time may be required for producing samples of less commonly used colors.